



GT Experiences

Welcome to Antibes
Juan-les-Pins
Côte d'Azur - France



IDEAL LOCATION

Halfway between Nice International Airport 15 km (10 miles) and Cannes 10km (6 miles)

NICE
INTERNATIONAL AIRPORT

OLD
ANTIBES

From
Old Antibes to
Juan-les-Pins:
25 minutes'
walk

JUAN-LES-PINS

CAP D'ANTIBES



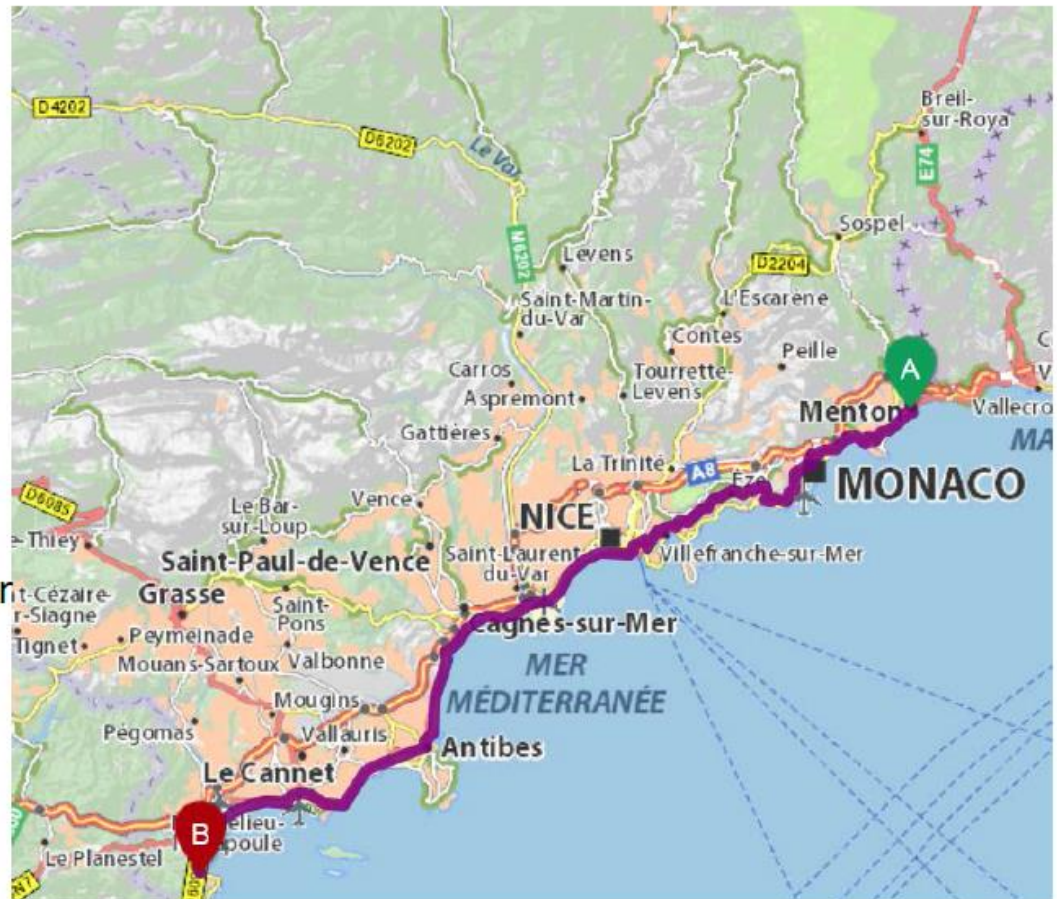


Distances by train :

Monaco to Nice : +/- 20 minutes

Nice to Antibes : +/- 30 minutes

Antibes to Cannes : +/- 10 minutes



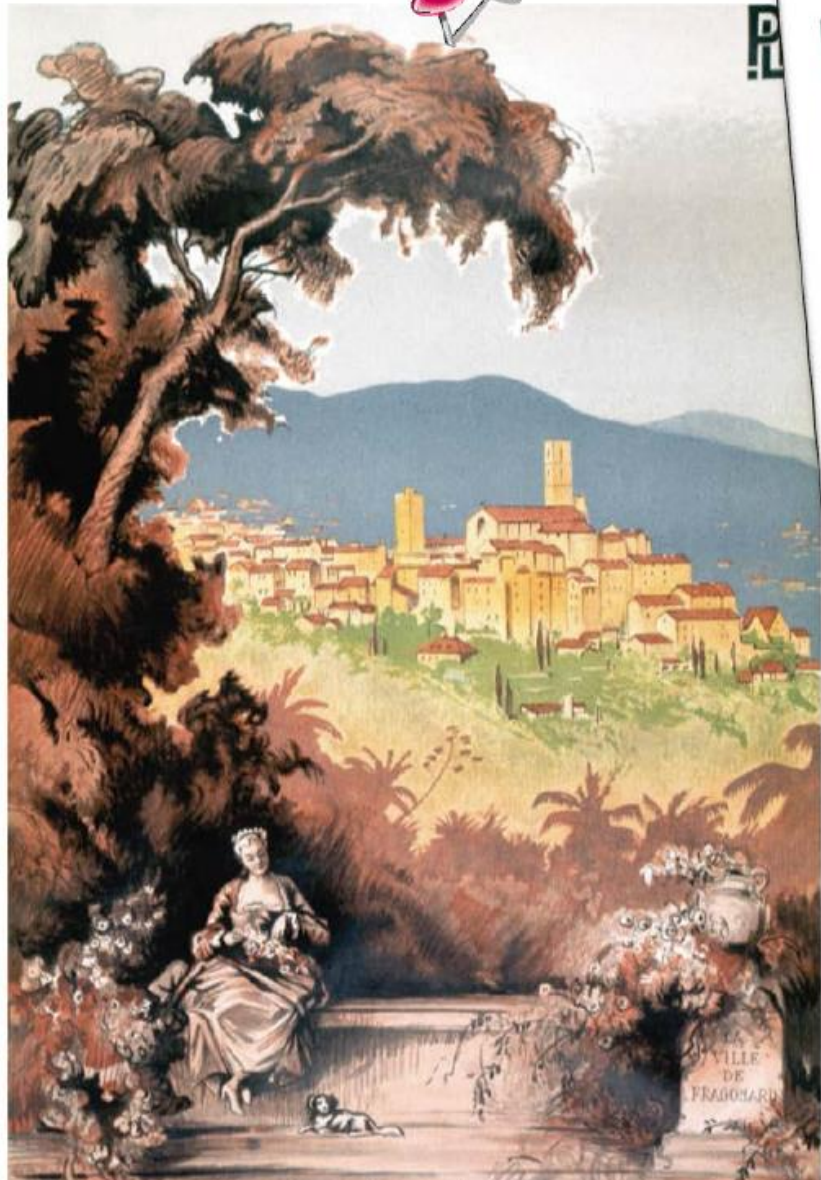
By car : from Menton to Théoule-sur-Mer

45 miles of coastline

From Santa Monica to Newport Beach

54 miles of coastline



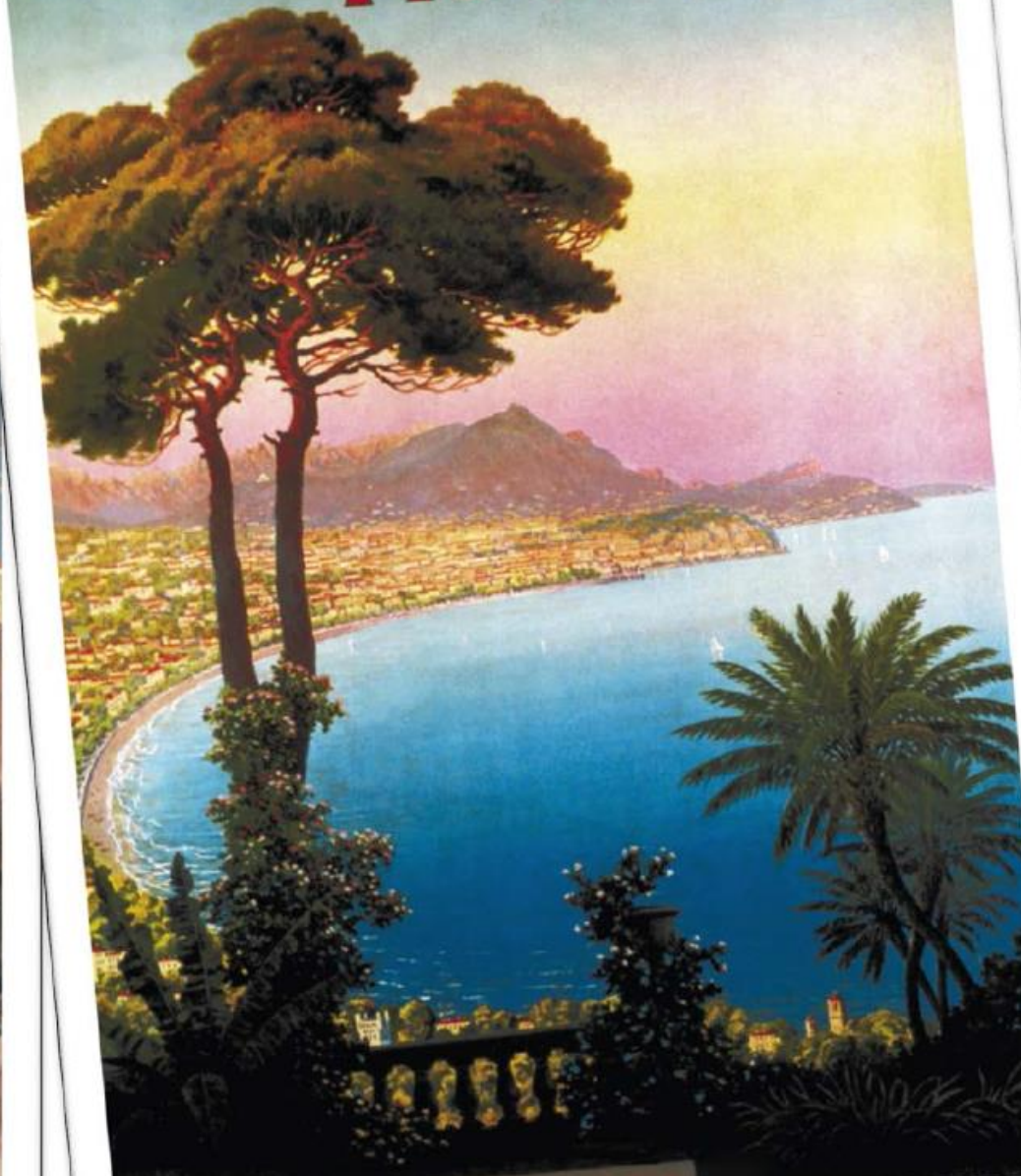


GRASSE CÔTE D'AZUR

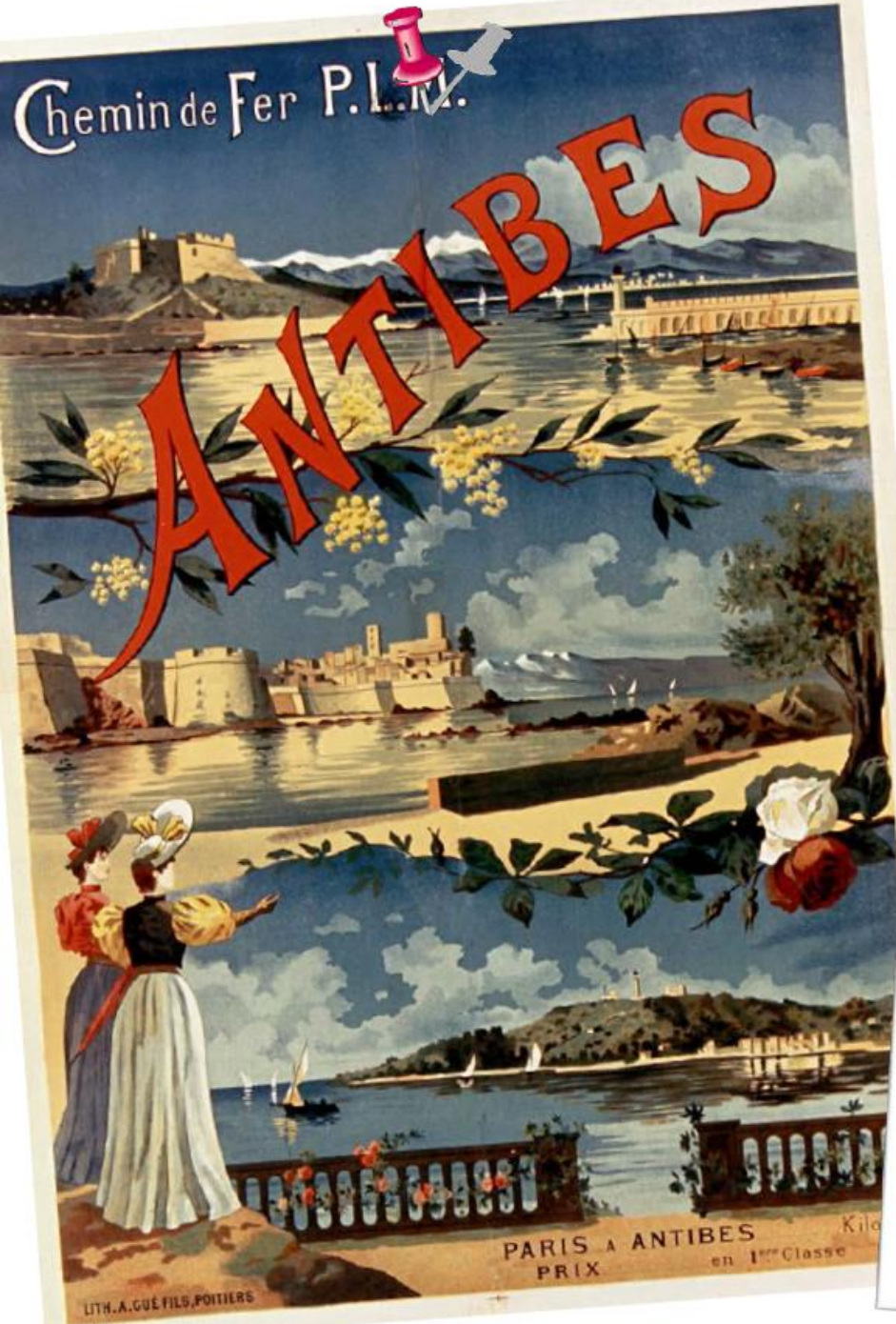
Cité du Calme, des Fleurs, et des Parfums

P.L.M.

NICE P.L.M.



LES PLUS BEAUX VUES DE NICE

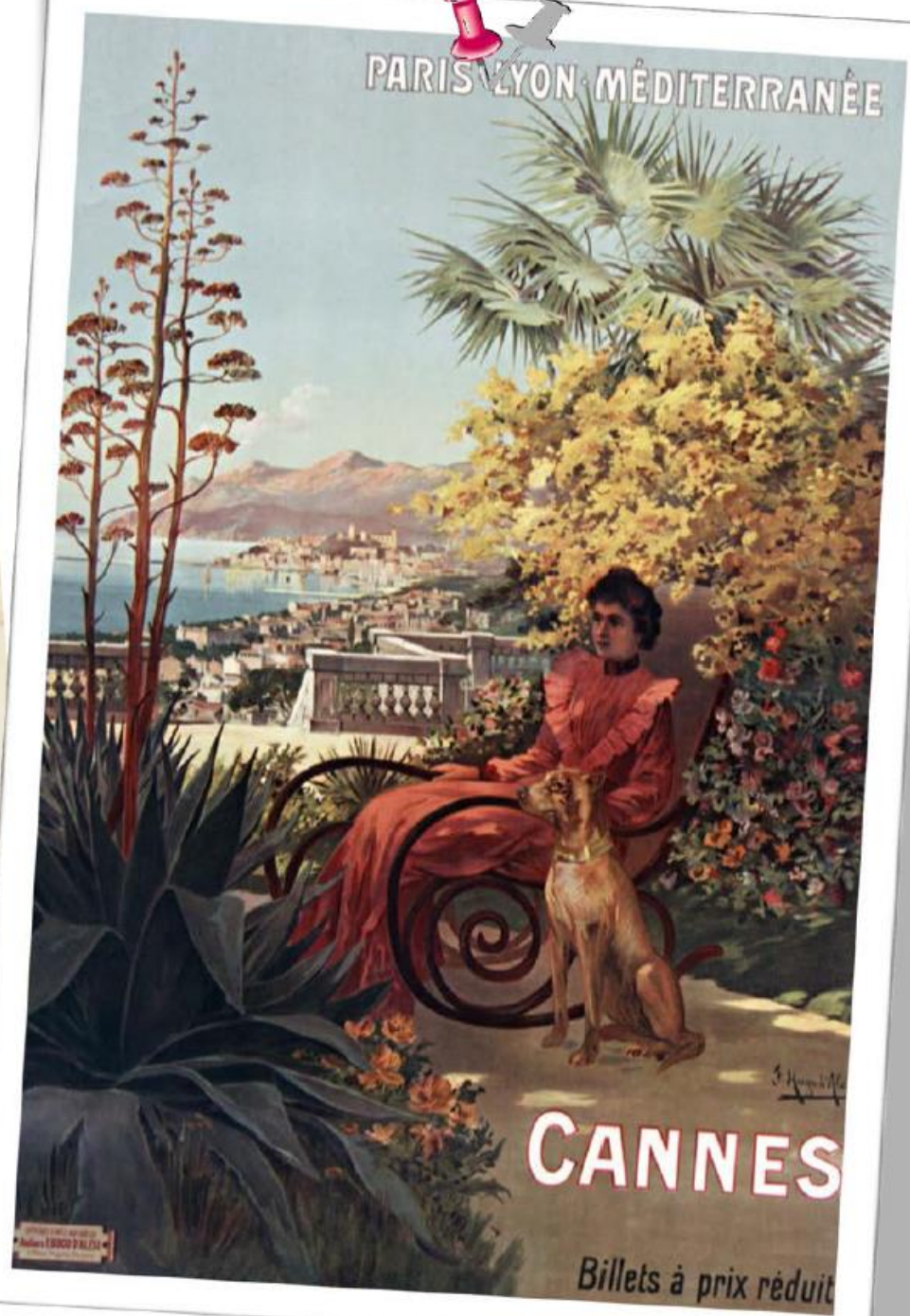


Chemin de Fer P.L.M.

ANTIBES

PARIS A ANTIBES
PRIX en 1^{re} Classe Kilo

LITH. A. GUÉ FILS, POITIERS

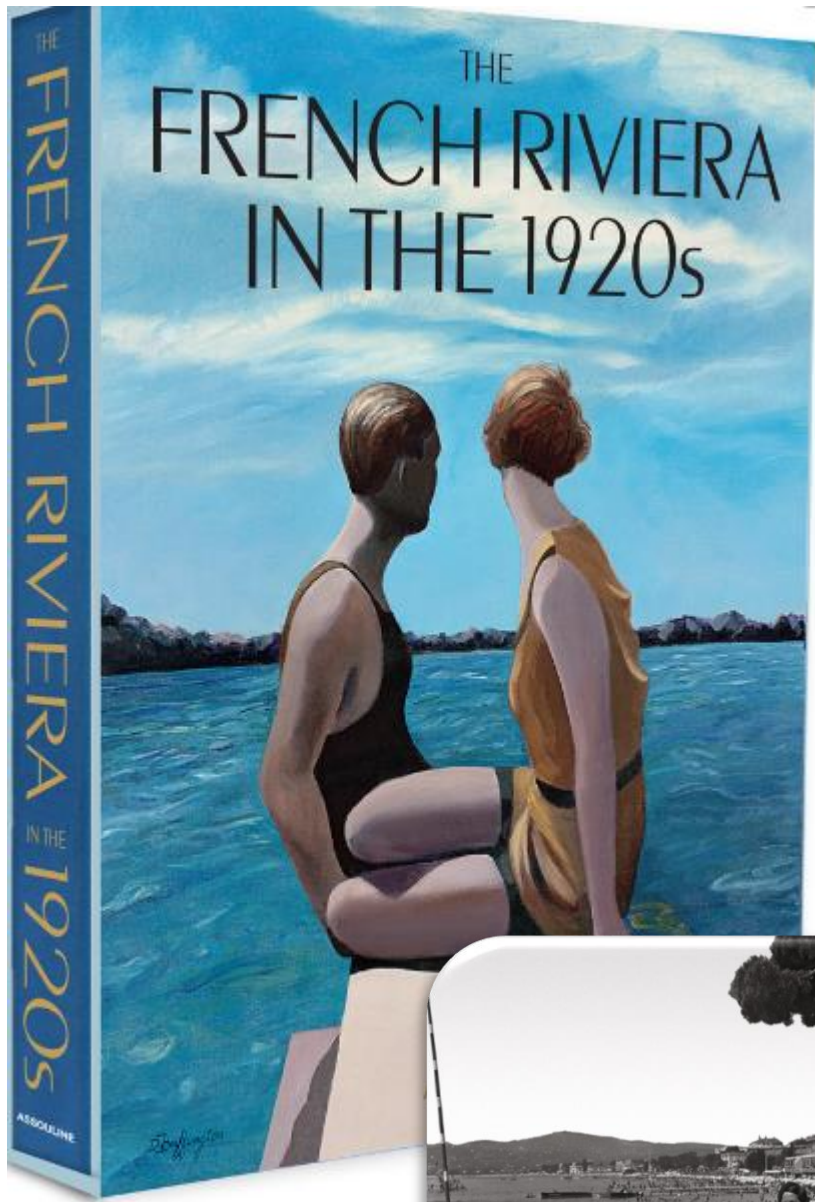


PARIS LYON MÉDITERRANÉE

CANNES

Billets à prix réduit

PARIS LYON MÉDITERRANÉE
Billets à prix réduit





ANTIBES

THE OLDEST CITY OF THE CÔTE D'AZUR

From a Greek Trading Outpost to a Medieval Stronghold, 2600 Years of Cosmopolitan History. A quintessential Provençal City on the Sea Front



PORT VAUBAN
Europe's biggest marina for private yachts



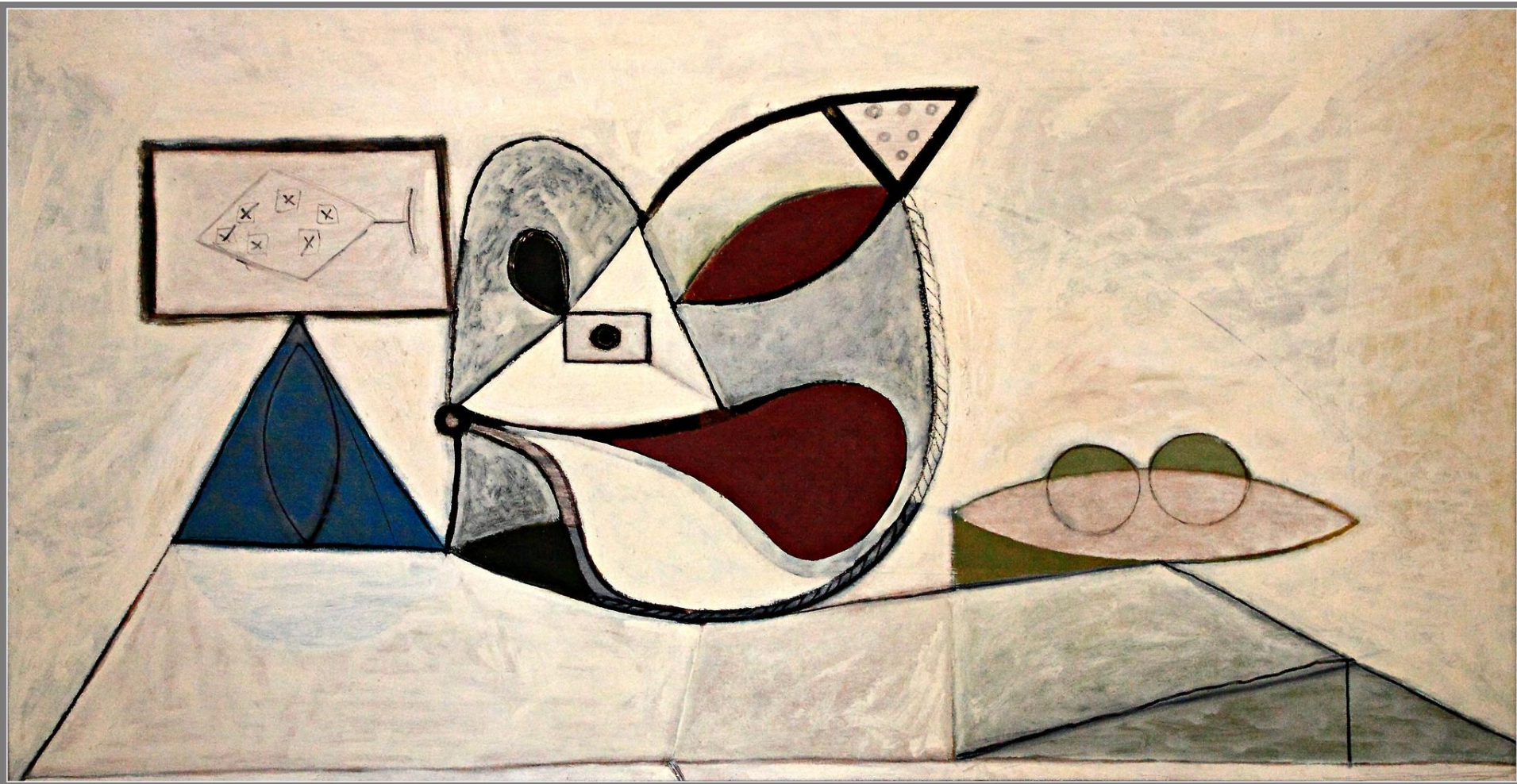
**CULTURE GALORE
PICASSO MUSEUM AND
HIS WORKSHOP IN 1946**

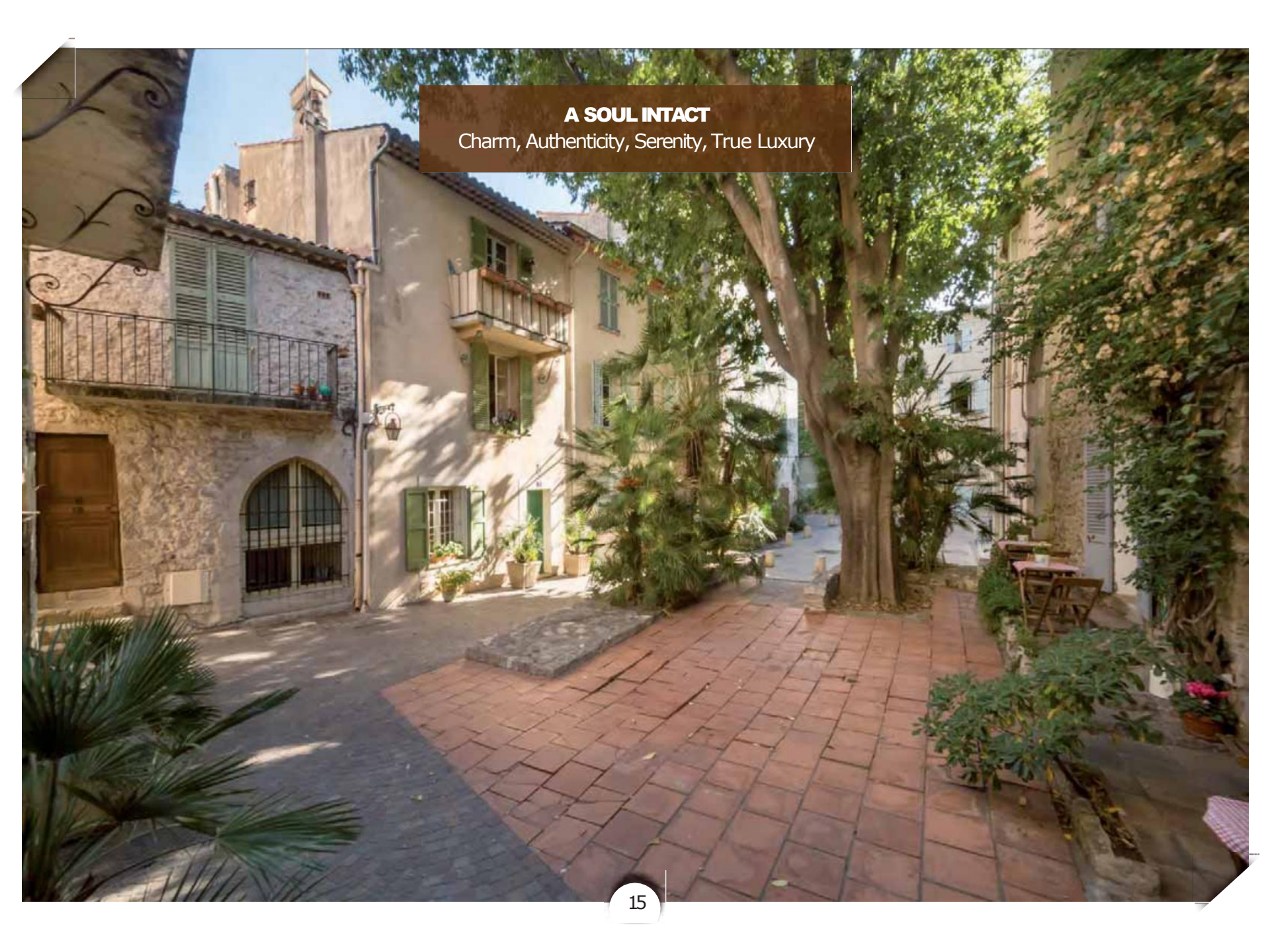
Over 300 works of art
comprising huge paintings,
drawings & ceramics









A photograph of a charming courtyard in a historic town. The courtyard is paved with reddish-brown tiles and is surrounded by stone buildings with green shutters and balconies. A large, leafy tree stands in the center, casting shadows on the ground. The scene is bright and sunny, with a clear blue sky. A dark brown text box is overlaid on the top right of the image.

A SOUL INTACT
Charm, Authenticity, Serenity, True Luxury



THE IRRESISTIBLE CHARM OF THE
OLD COBBLED STREETS

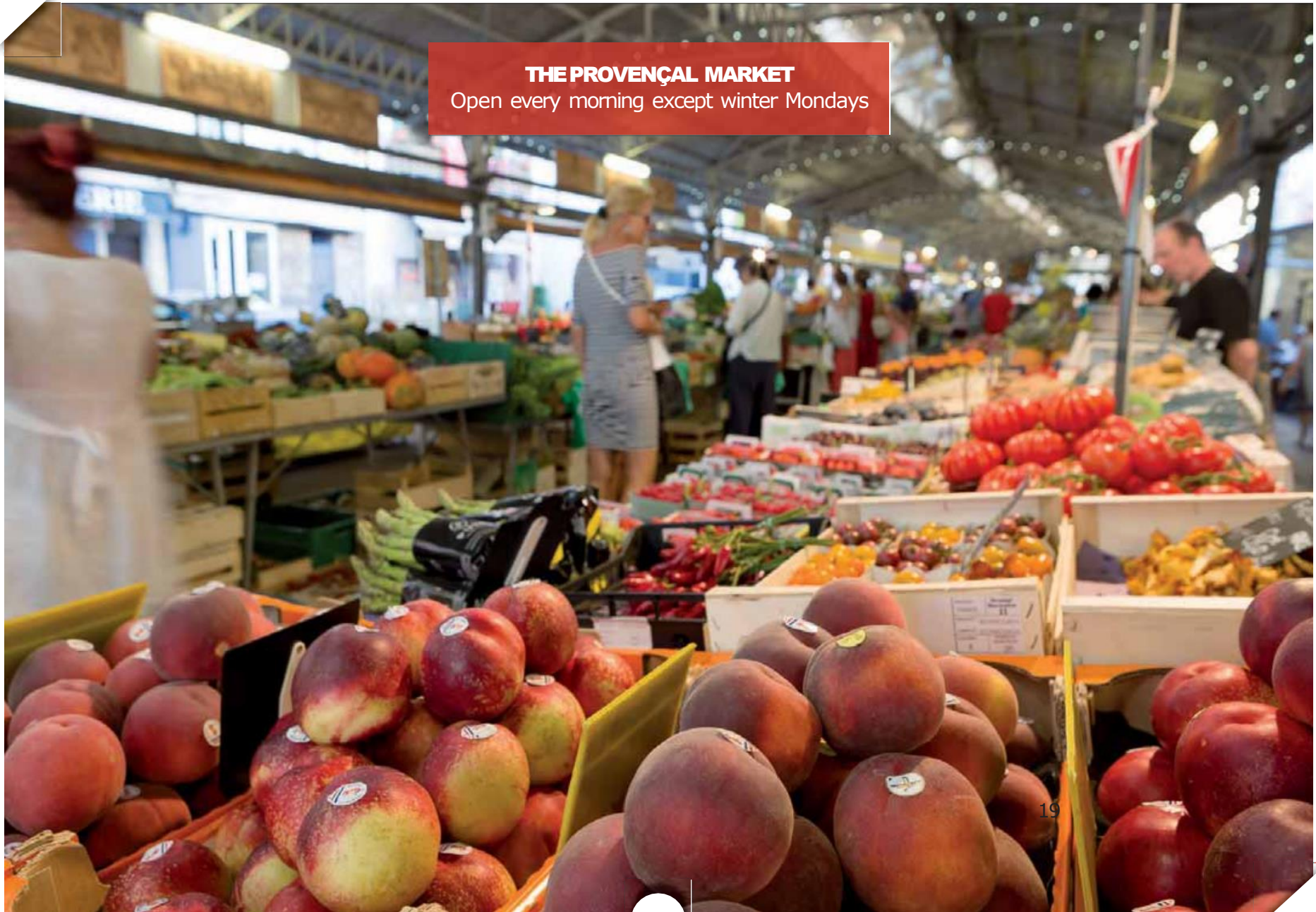
CRAFTING WITH THE ARTISTS





THE PROVENÇAL MARKET

Open every morning except winter Mondays



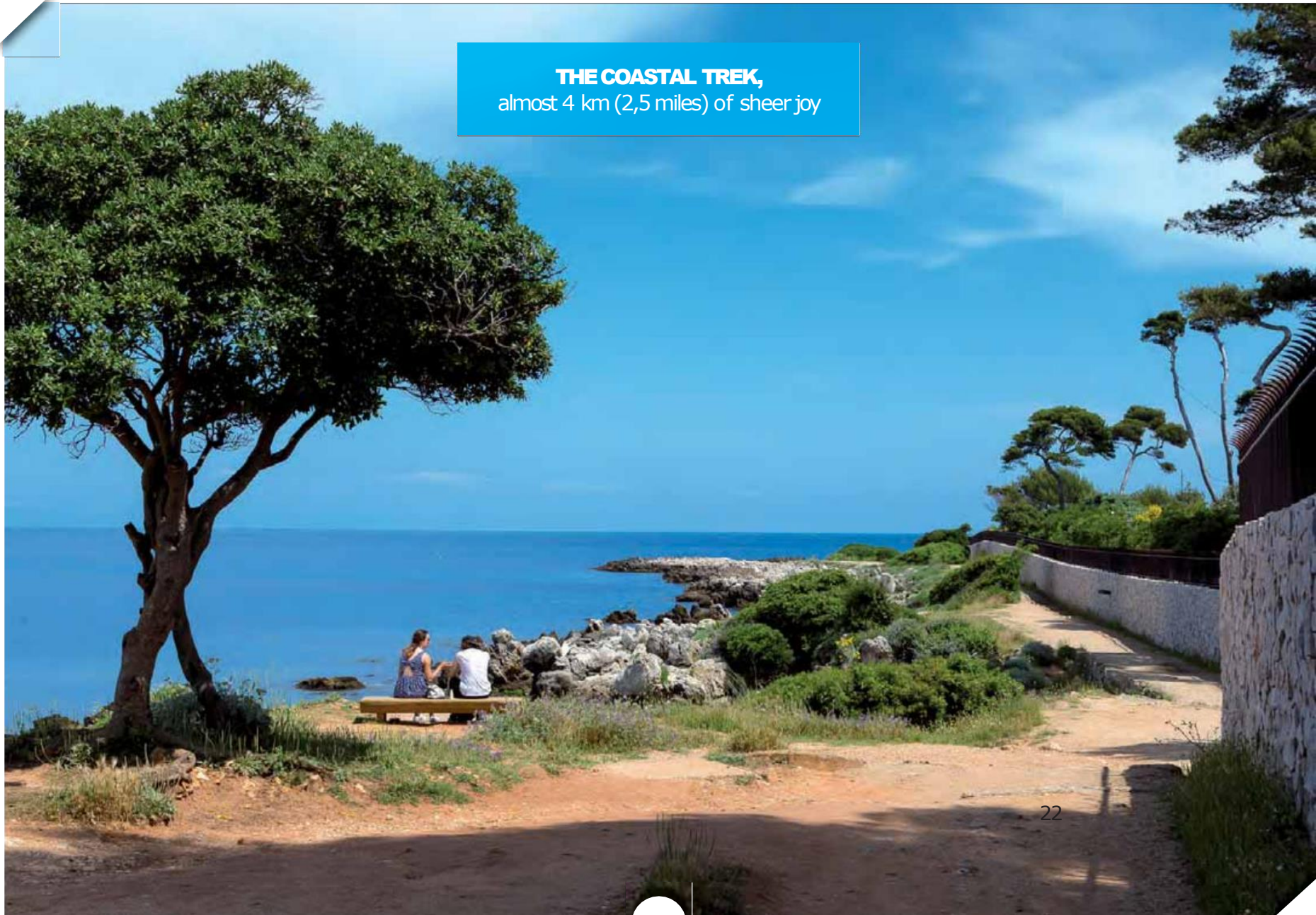


CAP D'ANTIBES

An ecological paradise, residential...
but not only!



THE COASTAL TREK,
almost 4 km (2,5 miles) of sheer joy



EVERYWHERE, STRIKING CONTRASTS
BETWEEN LUXURY AND SIMPLICITY





THE INTEMPORAL BEAUTY
OF A 150-YEAR-OLD PALACE

